

TERMINAL LUG - Comply with IEC61238-1

● COPPER CABLES ONLY

- Available wire range : IEC standard cables of Metric Cables.
- Color coded on the barrel to eliminate errors during installation and select to easy crimping dies.
- Material : High Conductivity copper per 99.9% up with Electro-Tin Plated.
- Voltage Rating : 35kV



● ONE-HOLE(ROUND TYPE)

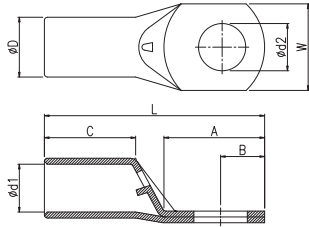


Fig. 1



UL listed



Certificate No : E-11820

● ONE-HOLE(SQUARE TYPE)

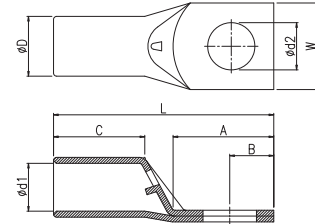


Fig. 2

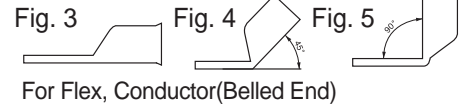
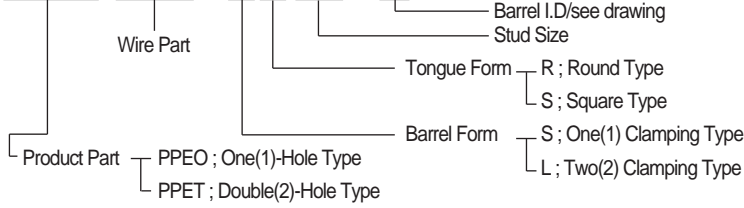
Wire Range		Part No.	Stud Size	Dimension										Dies Part No. (※)	Drawing			
Metric	mm			W	ø D	ø d1	ø d2	A	B	C		L						
CODE	FLEX									1-S	2-L	1-S	2-L	mm				
0.75	0.75	PPEO0000.75 -xx03-	3	6.5	2.8	1.3	3.3	8.2	4	6		17						
		-xx04-	4				4.3										10.5	19
		-xx05-	5				5.4										12.5	21
1.5	1.5	PPEO0001.5 -xx03-	3	6.5	3.3	1.8	3.3	8.5	4	6		17						
		-xx04-	4				4.3										10.5	19
		-xx05-	5				5.4										12.5	21
2.5	2.5	PPEO0002.5 -xx03-	3	6.5	4.2	2.3	3.3	8.5	4	6		17						
		-xx04-	4				4.3										10.5	19
		-xx05-	5				5.4										12.5	21
4	4	PPEO0004 -xx03-	3	9	5	3	3.3	8.5	4	8		19.5						
		-xx04-	4				4.3										10.5	21.5
		-xx05-	5				5.4										12.5	23.5
6	6	PPEO0006 -xx04-	4	11	5.5	3.5	4.4	13	6	10		26						
		-xx05-	5				5.4										17	28
		-xx06-	6				6.4										17	28
10	10	PPEO0101 -xx05-	5	15.5	6.6	4.6	5.4	14	6.2	15	21	33	39					
		-xx06-	6				6.4										20	8.2
		-xx08-	8				8.4										23	10.7
16	16	PPEO0102 -xx05-	5	10.5	7.5	5.5	5.4	14	6.2	15	21	33	39					
		-xx06-	6				6.4										20	8.2
		-xx08-	8				8.4										23	10.7
25	25	PPEO0103 -xx05-	5	13.5	9.5	7.2	5.4	17	7	17	23	40	46					
		-xx06-	6				6.4										23	10.7
		-xx08-	8				8.4										23	10.7
35	35	PPEO0104 -xx05-	5	16	11	8.5	5.4	20	9.3	20	26	46	52					
		-xx06-	6				6.4										23	10.7
		-xx08-	8				8.4										23	10.7
50	50	PPEO0105 -xx05-F	5	17	12	8.8	5.4	22	10	20	26	48	54					
		-xx06-F	6				6.4										22	10
		-xx08-F	8				8.4										22	10
70	70	PPEO0106 -xx05-	5	17.5	12	9.5	5.4	22	10.7	20	35	50	65					
		-xx06-	6				6.4										25	11
		-xx08-	8				8.4										25	11
70	70	PPEO0107 -xx08-	8	24.5	13.2	10.2	8.4	28	13	20	35	55	70					
		-xx10-	10				10.5										28	13
		-xx12-	12				13										28	13
70	70	PPEO0108 -xx08-	8	21	14.5	11.2	8.4	25	11	22	35	54	67					
		-xx10-	10				10.5										25	11
		-xx12-	12				13										25	11
70	70	PPEO0108 -xx10-	10	25	16	12.5	10.5	31	14.5	24	40	64	80					
		-xx12-	12				13										31	14.5
		-xx14-	14				15										31	14.5

(※) Dies No : See detail page E44-E45

TERMINAL LUG - Comply with IEC61238-1

HOW TO ORDER

PPEO 0101 - X X 05 - F



Wire Range		Part No.	Stud Size	Dimension										Dies Part No.(※)	Drawing
Metric	mm			W	ø D	ø d1	ø d2	A	B	C		L			
CODE	FLEX									1-S	2-L	1-S	2-L	mm	
95		PPEO0109 -xx08-	8	24.5	17	13.3	8.4	31	14.5	29	40	69	80	DCI3 -0095C	
		-xx10-	10												
		-xx12-	12												
		-xx14-	14												
		-xx16-	16												
95	95	-xx08-F	8	26	18	14	8.4	30	14	29	37	69	82	DCI3 -0095F	
		-xx10-F	10												
		-xx12-F	12												
		-xx14-F	14												
		-xx16-F	16												
120		PPEO0110 -xx08-	8	27.5	19	15.2	8.4	31	14.5	29	50	70	90	DCI3 -0120C	
		-xx10-	12												
		-xx12-	12												
		-xx14-	14												
		-xx16-	16												
150	120	PPEO0111 -xx08-	8	31	21	16.8	8.4	31	14.5	32	50	77	94	DCI3 -0150C -0120F	
		-xx10-	10												
		-xx12-	12												
		-xx14-	14												
		-xx16-	16												
		PPEO0111 -xx08-F	8	31	22	17.5	8.4	35	16	30	45	80	95		
		-xx10-F	10												
		-xx12-F	12												
		-xx14-F	14												
		-xx16-F	16												
185	150	PPEO0112 -xx10-	10	34	23.5	18.5	10.5	33	14.5	35	50	83	98	DCI3 -0185C -0150F	
		-xx12-	12												
		-xx14-	14												
		-xx16-	16												
		-xx20-	20												
200	185	PPEO0113 -xx10-	10	37.5	25	20	10.5	33	14.5	40	50	88	98	DCI3 -0200C -0185F	
		-xx12-	12												
		-xx14-	14												
		-xx16-	16												
		-xx20-	20												
	200	-xx10-F	10	37.5	26	20.5	10.5	38	18	40	51	94	105		
		-xx12-F	12												
		-xx14-F	14												
		-xx16-F	16												
		-xx20-F	20												
240		PPEO0114 -xx10-	10	40.5	28	22	10.5	34	14.5		50		102	DCI3 -0240C DSI3 -0240C	
		-xx12-	12												
		-xx14-	14												
		-xx16-	16												
		-xx18-	18												
300	240	PPEO0115 -xx10-	10	43.5	30.5	24	10.5	36	15		54		110	DCI3 -0300C -0240F DSI3 -0300C	
		-xx12-	12												
		-xx14-	14												
		-xx16-	16												
		-xx20-	20												
	300	-xx10-F	10	46	32	25	10.5	48	22		57		125	DSI3 -0300F	
		-xx12-F	12												
		-xx14-F	14												
		-xx16-F	16												
		-xx20-F	20												
400		PPEO0116 -xx12-	12	49	34	26.5	13	36	15		57		127	DSI3 -0400C	
		-xx14-	14												
		-xx16-	16												
		-xx20-	20												
		-xx24-	24												
500		PPEO0117 -xx12-	12	56.5	40	30	13	36	15		60		122	DSI3 -500C	
		-xx14-	14												
		-xx16-	16												
		-xx20-	20												
		-xx24-	24												
630		PPEO0118 -xx12-	12	64.5	45	35.5	13	48	23		70		150	DSI3 -0630C	
		-xx14-	14												
		-xx16-	16												
		-xx20-	20												
		-xx24-	24												

Fig 1
 Fig 2
 Fig 3
 Fig 4
 Fig 5

(※) Dies No : See detail page E44-E45